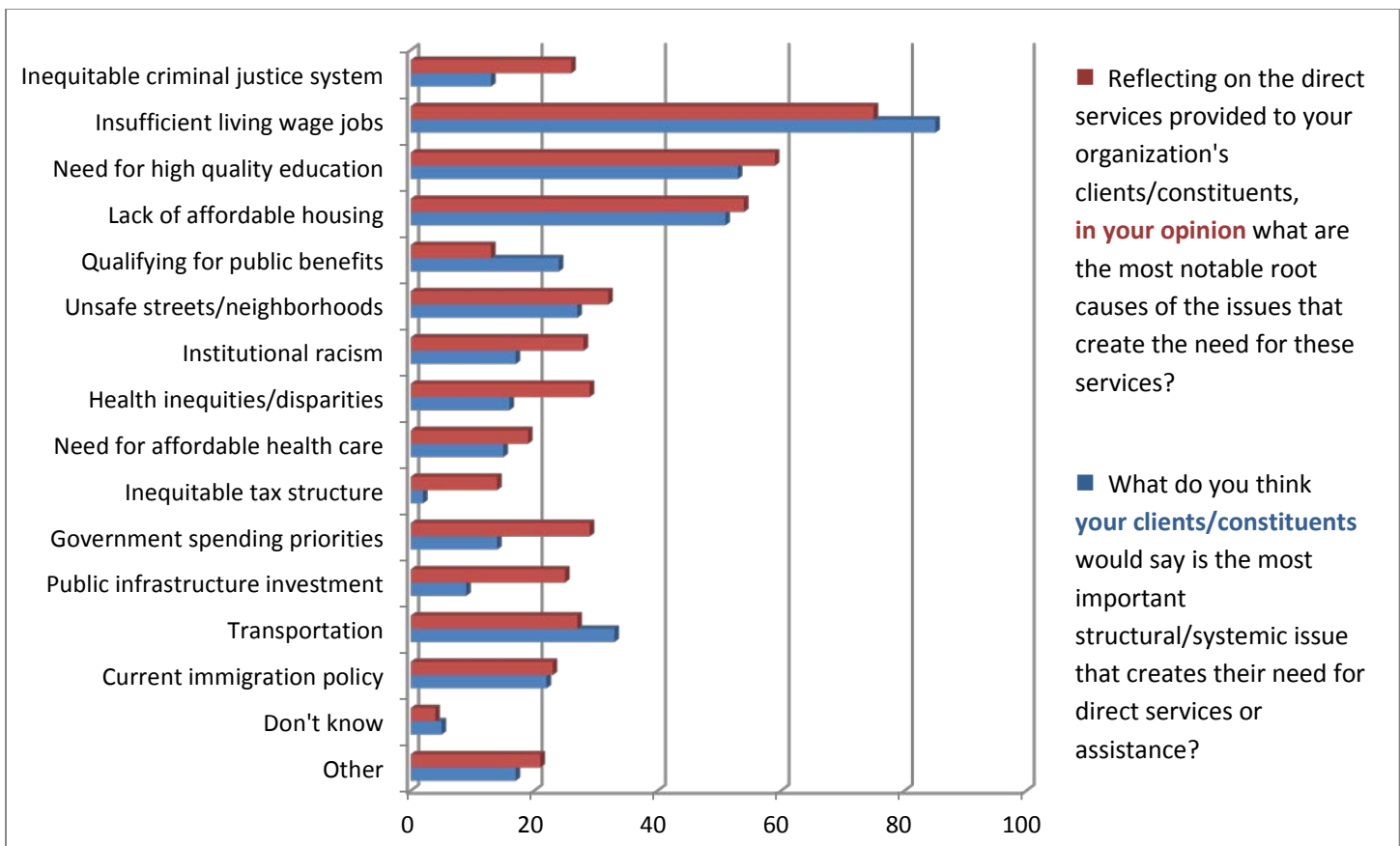
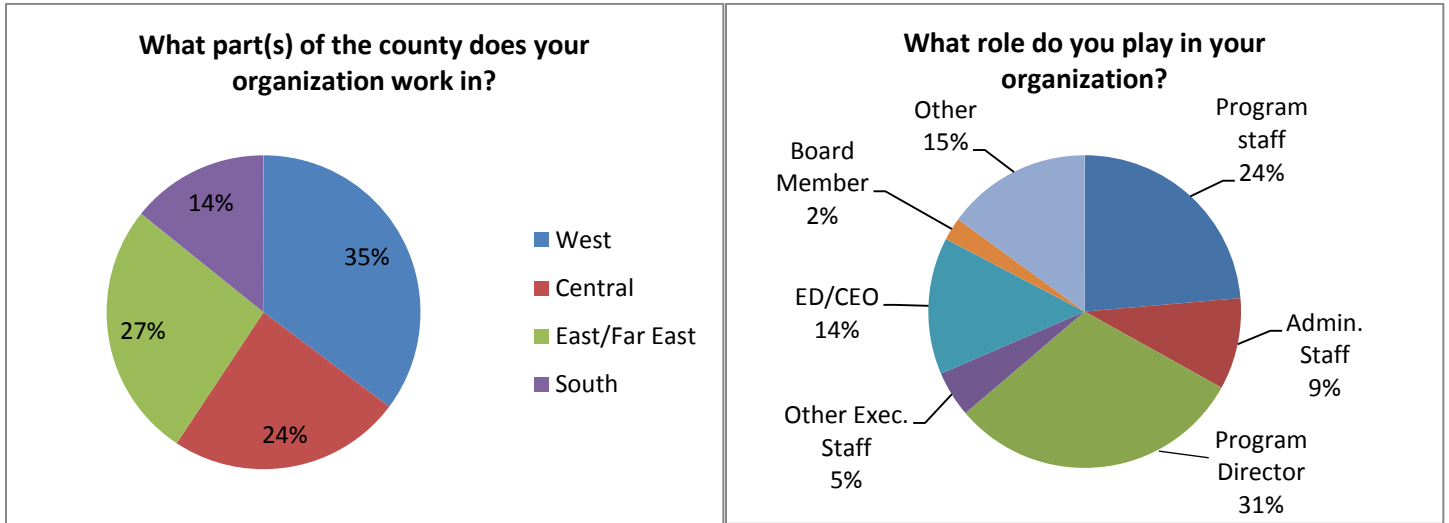
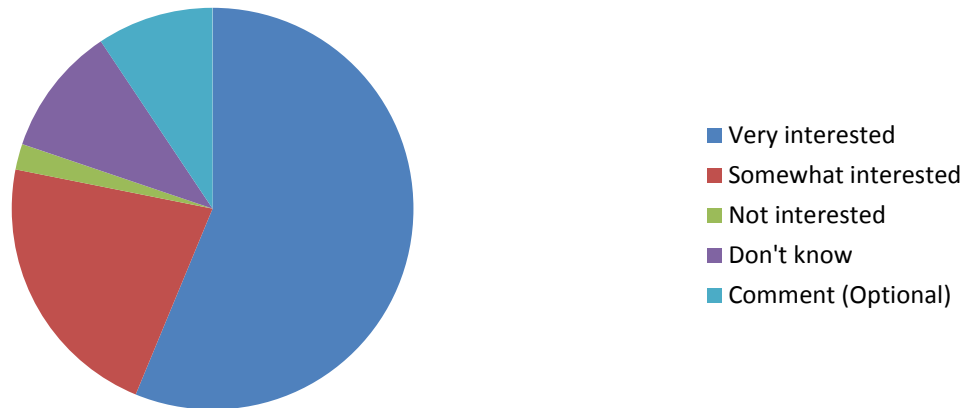


Family Economic Security Partnership (FESP) Policy Survey Highlights

127 people from 51 agencies responded to the FESP survey asking them what they thought were the key root structural causes that contribute to poverty and their interest in addressing these issues. Highlights are shared below; to see responses to the full survey please go to: [www.firstfivecc.org/Programs/Family Economic Security Partnership](http://www.firstfivecc.org/Programs/Family%20Economic%20Security%20Partnership).



To what extent has your organization expressed an interest in participating in community building, policy advocacy/implementation and systems change?



What are the barriers to your organization's ability to participate in policy work?

