

## Welcome to the ACEs Aware Initiative

- [ACEs Aware Website \(State\)](#)
- [Office of Surgeon General website](#) - Dr. Nadine Burke-Harris

## PART I: From Rupture to Repair

### Dr. Alicia Lieberman

- [Video Link: Long version Ghosts and Angels in the Nurseries](#)  
A Conversation with Dr. Alicia Lieberman and Dr. David Oppenheim This program was made possible by The Koret Foundation; Dr. Anita Friedman A very special thanks to Jewish Family and Children's Services of San Francisco
- [Journal article](#): Lieberman AF, Padrón E, Van Horn P, Harris WW. Angels in the nursery: The intergenerational transmission of benevolent parental influences. Infant Mental Health J. 2005 Nov;26(6):504-520. doi: 10.1002/imhj.20071. PMID: 28682485.

### Kanwarpal Dhaliwal, RYSE Associate Director

- [RYSE CENTER](#)
- [ACEs and Social Location Graphic](#)

### Jen Leland, Director Partnerships Trauma Transformed

- [Trauma Transformed](#)
- [ACEs Aware Communities of Practice page](#) Includes upcoming Racing ACEs convening and Supplemental trainings
- [TIS Community of Practice page](#) includes Trauma-informed Systems resources

## PART II: From Referrals to Relationships

### Wanda Davis

- [First 5 Contra Costa County](#)

### Cassandra Robinson

- Community Support Worker II/Family Partner/Team Lead
- [Wraparound Facilitator](#)

### Maggie Velasco

- [Wraparound Team Lead](#)
- Contra Costa County Children's Behavioral Health

## Wendy Diaz

- [Help Me Grow Care Coordinator](#), Contra Costa Crisis Center
- [Help Me Grow Fact Sheet](#) (PDF)

## Focus on Culture Building & Expression through Art and Music

- [East Bay Center for the Performing Arts](#)
- [Valerie Troutt](#) I am an artist video

## Lunchtime Playlist

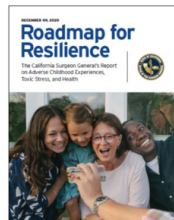
- [Contra Costa Network of Care Spotify Mix](#)

## Part III: From Awareness to Realization

### [ACEs Aware Roadmap to Resilience Report](#)

#### Critical Takeaways

- **California has foundational leadership** to chart the course on cutting ACEs and toxic stress in half in a generation
- **Toxic Stress is a health condition that is amenable to treatment**
- **Prevention at all levels**
  - An effective response requires prevention at all three levels: primary, secondary, and tertiary. None of these strategies is sufficient alone, and each extends the reach of the others.
- **Cross-Sector Approach**
  - Addressing this public health crisis requires shared understanding of the problem, shared language, clarity of roles, shared metrics, and accountability



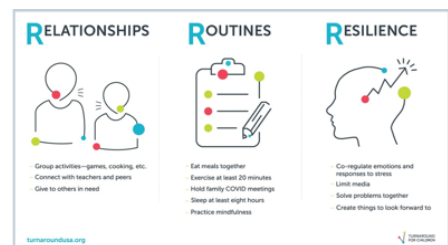
### [Contra Costa Network of Care Online Hub](#)



## Spotlighted Network Members

### Dave Fendel

- Coordinator, Social Emotional Learning
- Contra Costa County Office of Education
- [Turn Around for Children: 3 R's TOOL KIT AND GUIDES](#)



### Ruth Hunter

- [Contra Costa Head Start](#) EHSD- Community service Bureau- Head Start, George Miller III

### Dr. Barbara Botelho, MD

- Pediatrician, [La Clinica, Pittsburg](#)

---

Connect with us—and one another—in the [Contra Costa Network of Care](#) online hub and share your take-aways from our Spring Convening.