



Meet Your Representatives

A GUIDE TO LOCAL, STATE, & FEDERAL ELECTED OFFICIALS SERVING CONTRA COSTA COUNTY

The **Meet Your Representatives** guide is a resource developed to help Contra Costa County residents and community partners get to know the elected officials who represent them at the federal, state, and county levels. This document includes official titles, brief bios, district maps, and staff contacts where available. Whether you are looking to engage in advocacy, stay informed, or connect with leaders on community issues, this guide provides a starting point for building relationships with your representatives.

Table of Contents

Federal Representatives

U.S. Senator Alex Padilla	<u>2</u>
U.S. Senator Adam Schiff	<u>3</u>
U.S. Congress Member Mark DeSaulnier (District 10)	<u>4</u>
U.S. Congress Member Eric Swalwell (District 14)	<u>5</u>

California State Representatives

State Senator Jesse Arreguín (District 7)	<u>6</u>
State Senator Tim Grayson (District 9)	<u>8</u>
State Senator Christopher Cabaldon (District 3)	<u>10</u>
State Assemblymember Anamarie Avila Farias (District 15)	<u>12</u>
State Assemblymember Lori Wilson (District 11)	<u>14</u>
State Assemblymember Buffy Wicks (District 14)	<u>16</u>
State Assemblymember Rebecca Bauer-Kahan (District 16)	<u>17</u>

Contra Costa County Board of Supervisors

Supervisor John Gioia (District 1)	<u>19</u>
Supervisor Candace Andersen (District 2)	<u>21</u>
Supervisor Diane Burgis (District 3)	<u>23</u>
Supervisor Ken Carlson (District 4)	<u>25</u>
Supervisor Shanelle Scales-Preston (District 5)	<u>27</u>

US SENATOR

Alex Padilla

CALIFORNIA

[ABOUT](#)

[FACTS](#)

[COMMITTEE ASSIGNMENTS](#)

Alex Padilla, a Democrat from Los Angeles, is a U.S. Senator for California.

Before joining the Senate in 2021, he served as California's Secretary of State and was previously a state senator. His current term runs through 2029.

Padilla, an MIT-trained engineer, is the first Latino to represent California in the U.S. Senate.



Padilla serves on the following committees: Judiciary; Budget; Environment and Public Works; Energy and Natural Resources; and Rules and Administration.

US SENATOR

Adam Schiff

CALIFORNIA

[ABOUT](#)

[FACTS](#)

[COMMITTEE ASSIGNMENTS](#)

Adam Schiff, a Democrat from Burbank, is a U.S. Senator for California.

Before joining the Senate in 2024, he served in the U.S. House of Representatives for over two decades. His current term runs through 2031.

A former federal prosecutor, Schiff gained national recognition for his role in congressional investigations and intelligence oversight.

Schiff serves on the following committees: Judiciary; Environment and Public Works, Agriculture, Nutrition & Forestry, and Small Business and Entrepreneurship.



US CONGRESS MEMBER

Mark DeSaulnier

DISTRICT 10

[ABOUT](#)

[FACTS](#)

[COMMITTEE ASSIGNMENTS](#)

Mark DeSaulnier (DE-SOWN-YAY), a Democrat from Concord, represents California's 10th Congressional District, covering Contra Costa County.

He has served in Congress since 2015, following roles in the California State Senate and Assembly. Before his political career, he was a small business owner and local government official.



He is known for his work on transportation, labor, and health policy.

DeSaulnier serves on the following committees: Education and the Workforce; Transportation and Infrastructure; and Ethics.

US CONGRESS MEMEBER

Eric Swalwell

DISTRICT 14

[ABOUT](#)

[FACTS](#)

[COMMITTEE ASSIGNMENTS](#)

Eric Swalwell is a Democratic U.S. Representative for California's 14th Congressional District, which includes parts of Alameda and Contra Costa counties.

Born in Sac City, Iowa, and raised in Dublin, California, he earned his undergraduate and law degrees from the University of Maryland, College Park, and the University of Maryland, Baltimore, respectively.



Before serving in Congress, he worked as a prosecutor in the Alameda County District Attorney's Office.

First elected in 2012, he began his congressional term on January 3, 2013, and is now serving his seventh term.

Swalwell sits on the House Judiciary and Homeland Security Committees and has been a strong advocate for national security, technology innovation, and gun violence prevention.

STATE SENATOR

Jesse Arreguín

DISTRICT 7

[ABOUT](#)

[FACTS](#)

[COMMITTEE ASSIGNMENTS](#)

Jesse Arreguín, a Democrat from Berkeley, was elected to represent California's 7th Senate District—which includes parts of Contra Costa and Alameda counties—in November 2024.

Born in Fresno and raised in San Francisco, he is the son and grandson of migrant farmworkers.

Arreguín made history as Berkeley's first Latino mayor, serving from 2016 to 2024.

His legislative priorities focus on housing affordability, homelessness reduction, healthcare access, insurance reform, and combating climate change.

Arreguín serves on the following committees: Public Safety (Chair); Human Services (Chair); Business, Professions & Economic Development; Energy, Utilities & Commissions; Housing; Local Government; Transportation.

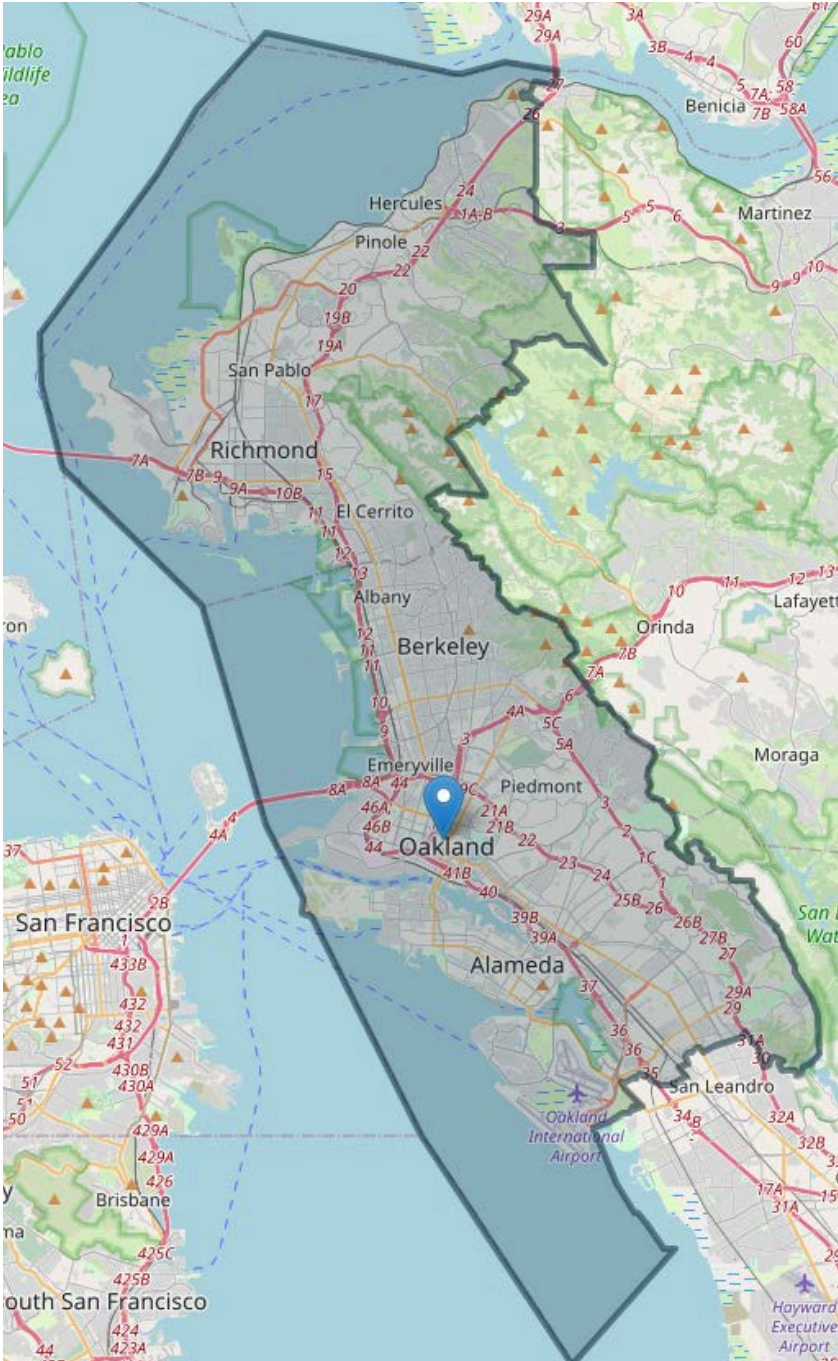


[LI](#) | [FB](#) | [X](#) | [IG](#) | [YT](#) | [BS](#)

STATE SENATOR

Jesse Arreguín

DISTRICT 7



Senate District 7 includes portions of Alameda, Contra Costa, and San Francisco Counties. It contains the cities of Alameda, Albany, Berkeley, El Cerrito, Emeryville, Hercules, Oakland, Piedmont, Pinole, Richmond, and San Pablo.

STATE SENATOR

Tim Grayson

DISTRICT 9

[ABOUT](#)

[FACTS](#)

[COMMITTEE ASSIGNMENTS](#)

Tim Grayson is a Democratic California State Senator representing the 9th Senate District, which encompasses central, south, and parts of east Contra Costa County.

Born in Vallejo, California, Grayson served as the Mayor of Concord from 2014 to 2016 before being elected to the California State Assembly in 2016, where he represented the 14th Assembly District until 2024.



In the Assembly, he focused on issues such as affordable housing, transportation infrastructure, and public safety.

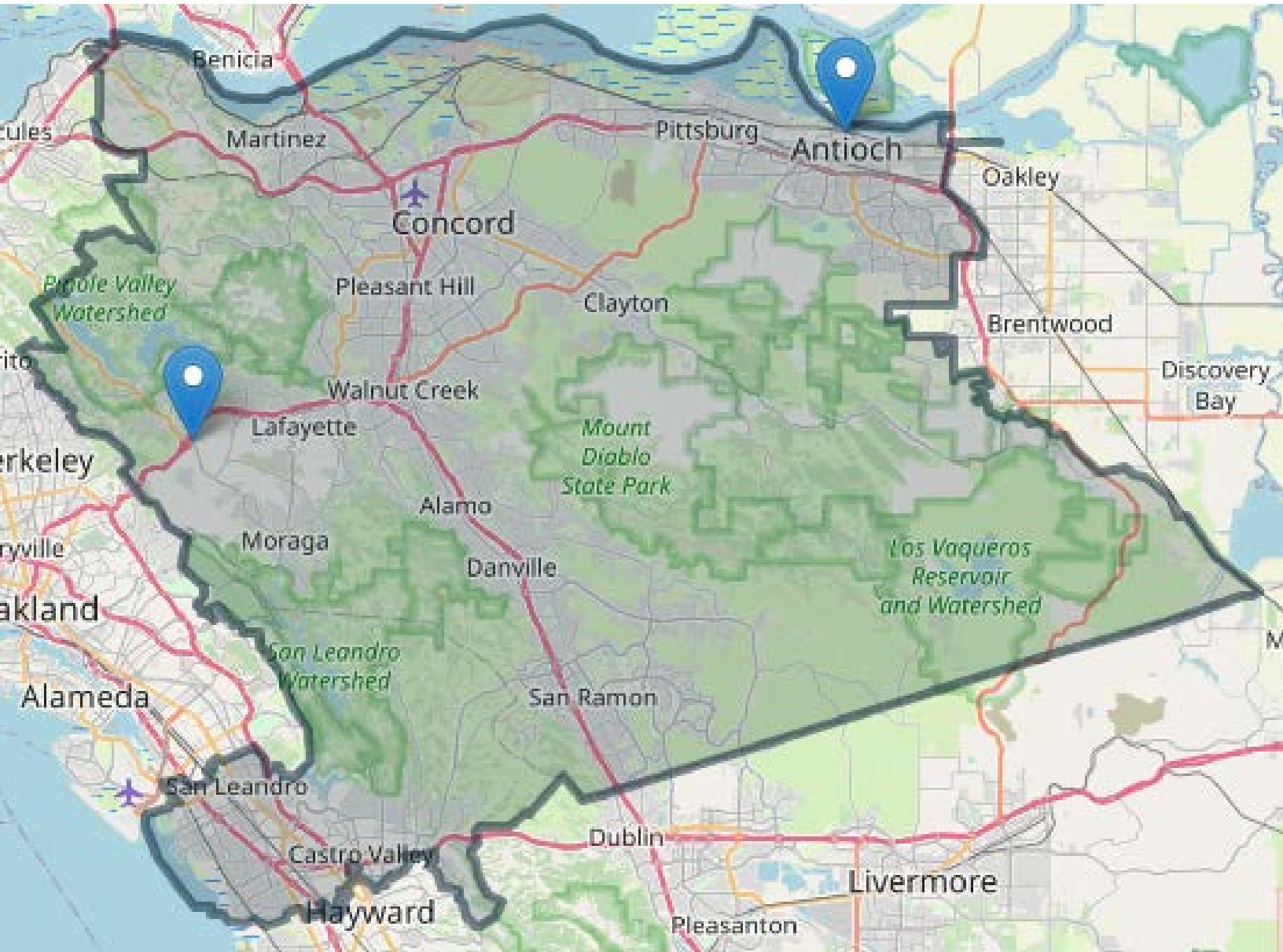
Elected to the State Senate in November 2024, Grayson continues to advocate for policies that support economic development, education, and environmental sustainability.

Grayson serves on the following committees: Banking and Financial Institutions (Chair); Appropriations; Business, Professions and Economic Development; Health; and Revenue and Taxation.

STATE SENATOR

Tim Grayson

DISTRICT 9



Senate District 09 contains Alameda and Contra Costa County. The cities include Ashland, Castro Valley, Cherryland, San Leandro, Alamo, Alhambra, Antioch, Lafayette, Martinez, Moraga, Mountain View, North Gate, Pleasant Hill, Orinda, San Ramon, and several more smaller cities.

STATE SENATOR

Christopher Cabaldon

DISTRICT 3

[ABOUT](#)

[FACTS](#)

[COMMITTEE ASSIGNMENTS](#)

Christopher Cabaldon, a Democrat, was elected to the CA State Senate in 2024, representing District 3, which encompasses parts of Contra Costa County, including the cities of Oakley and Brentwood, as well as areas within Napa, Solano, Sonoma, Yolo, and Sacramento counties.

Prior to his tenure in the State Senate, he served as the mayor of West Sacramento from 1998 to 2020, making him the city's longest-serving mayor. Cabaldon holds a

bachelor's degree in environmental economics from the University of California, Berkeley, and a master's degree in public policy and administration from Sacramento State University.

He is the first Filipino American to serve in the California State Senate and the first openly LGBTQ+ senator elected north of San Francisco and Stockton.

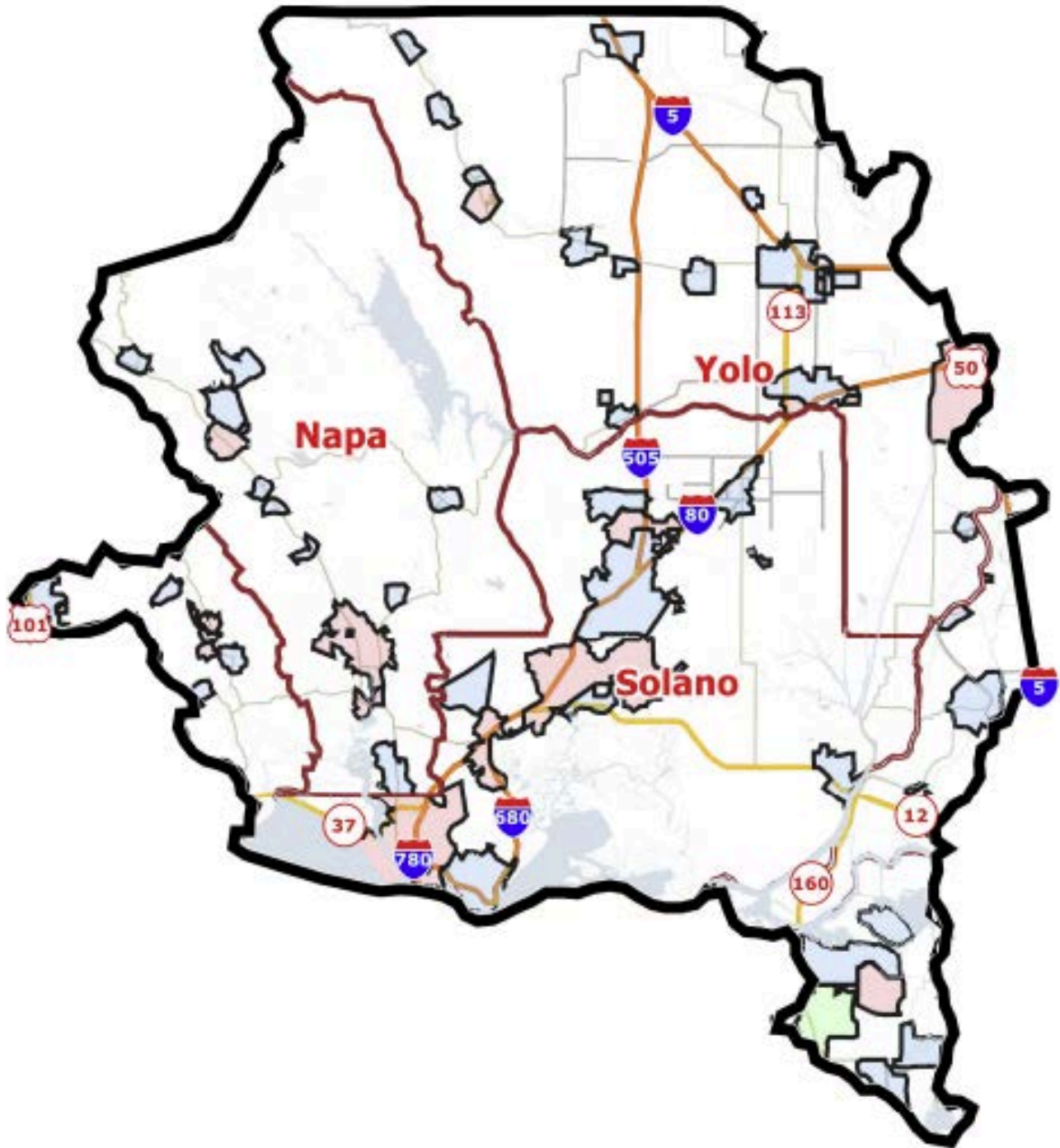
Cabaldon serves on the following committees: Budget Subcommittee 4 (Chair); Budget and Fiscal Review Committee; Appropriations; Education; Housing; and Local Government.



STATE SENATOR

Christopher Cabaldon

DISTRICT 3



State Senate District 3 includes the entire Counties of Napa, Solano, Yolo, and portions of Contra Costa, Sacramento, and Sonoma Counties. It also includes the whole Cities of American Canyon, Benicia, Brentwood, Calistoga, Cotati, Davis, Dixon, Fairfield, Isleton, Napa, Oakley, Rio Vista, Rohnert Park, St. Helena, Sonoma, Suisun City, Vacaville, Vallejo, West Sacramento, Winters, Woodland, and Yountville.

STATE ASSEMBLYMEMBER

Anamarie Ávila Farías

DISTRICT 15

[ABOUT](#)

[FACTS](#)

[COMMITTEE ASSIGNMENTS](#)

Anamarie Ávila Farías (District 15), is a Democrat. District 15, encompasses parts of Contra Costa County and the East Bay.

Sworn into office in December 2024, she brings decades of experience in public service, particularly in affordable housing, economic development, and educational equity. She earned her bachelor's and master's degrees from the University of SF.



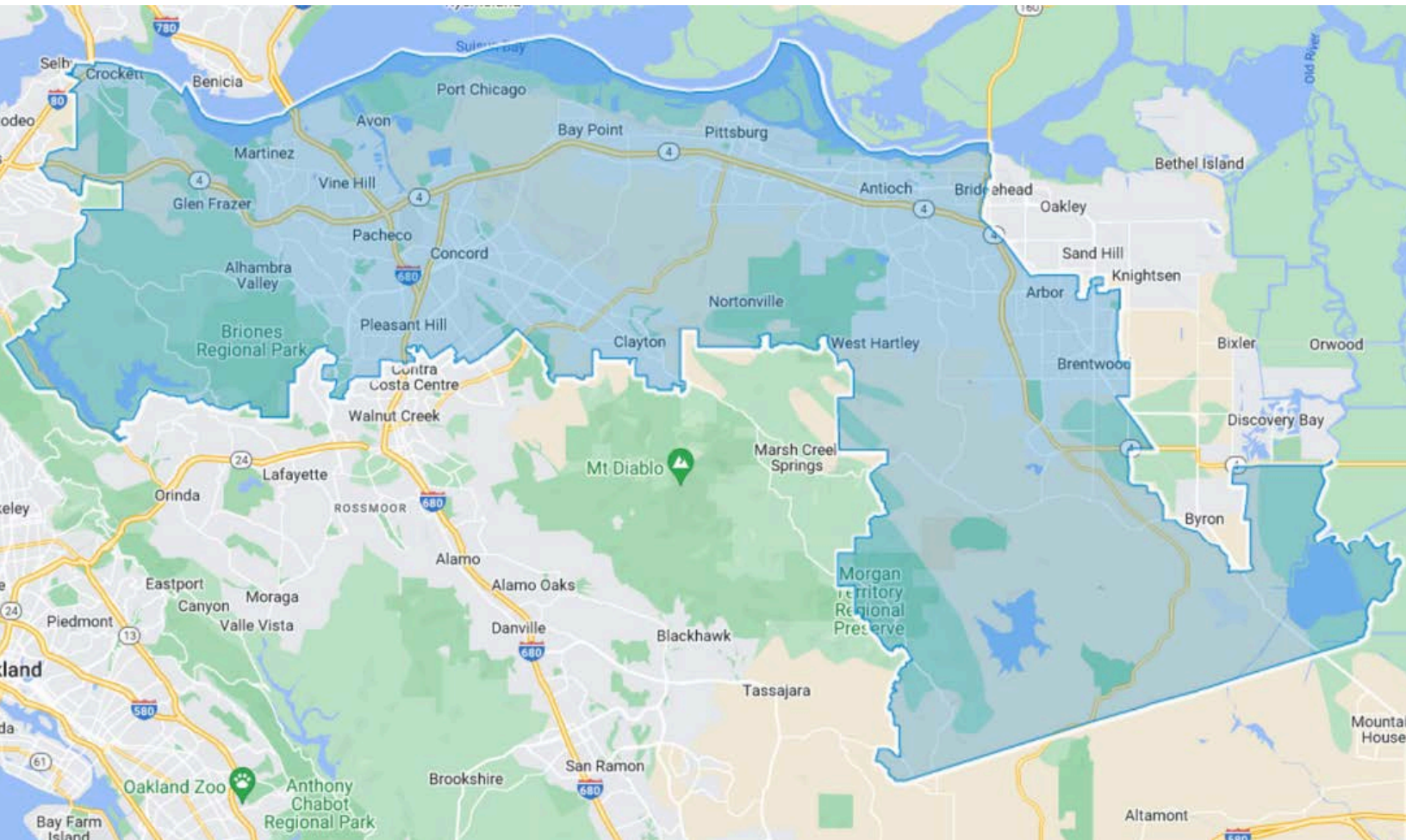
She made history in 2012 as the first Latina elected to the Martinez City Council and later served on the Contra Costa County Board of Education.

Ávila Farías serves on the following committees: Aging and Long-Term Care; Housing and Community Development; Insurance; Military and Veterans Affairs; and Water, Parks, and Wildlife.

STATE ASSEMBLY MEMBER

Anamarie Ávila Farías

DISTRICT 15



The 15th Assembly District is entirely made up of Contra Costa County and covers over half of the County. 32% percent of its residents are Hispanic or Latino, nearly 15% are Asian and 10% are Black or African American. Assembly District 15 encompasses the following cities: Antioch, Bay Point, Brentwood, Clayton, Concord, Clyde, Crockett, Martinez (Mountain View, Alhambra Valley, Reliz Valley, Vine Hill), Pittsburg, Pleasant Hill, Pacheco, Port Costa, Walnut Creek – 0.5%.

STATE ASSEMBLYMEMBER

Lori Wilson

DISTRICT 11

[ABOUT](#)

[FACTS](#)

[COMMITTEE ASSIGNMENTS](#)

Lori Wilson, a Democrat, was elected in April 2022 to represent CA's 11th Assembly District which includes all of Solano County and portions of Contra Costa and Sacramento Counties.

Before joining the Assembly, she served as the Mayor of Suisun City. Wilson was the first Black female Mayor to serve in the entire history of Solano County.



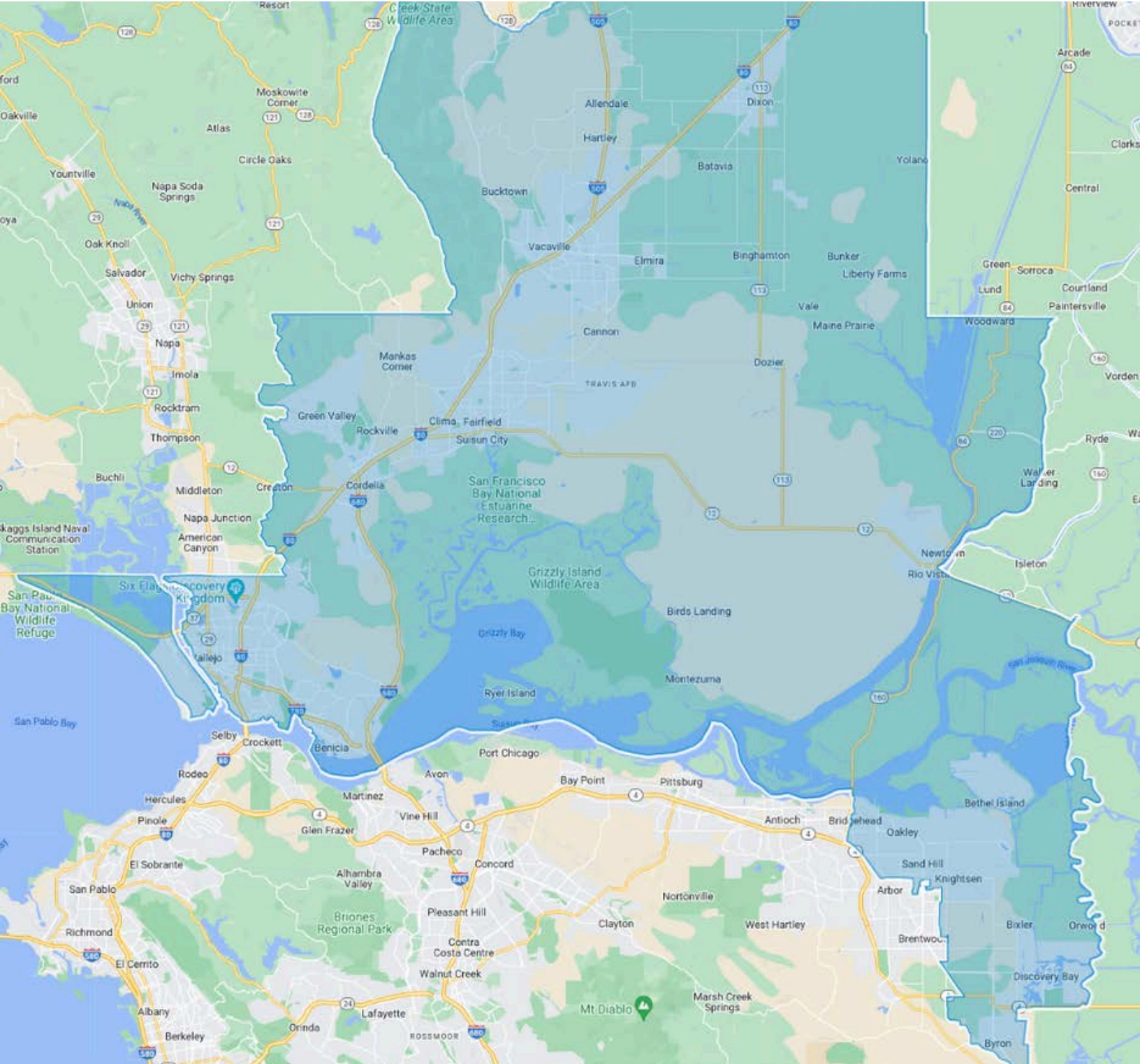
She is an advocate for economic development, affordable housing, education, and equitable healthcare access. She champions policies that uplift working families, expand educational opportunities, and promote environmental sustainability.

Wilson serves on the following committees: Transportation (Chair); Budget; Housing and Community Development; Local Government; and Privacy and Consumer Protection.

STATE ASSEMBLYMEMBER

Lori Wilson

DISTRICT 11



The 11th Assembly District includes the areas of Benicia, Dixon, Fairfield, Oakley, Rio Vista, Suisun City, Vacaville and Vallejo.

STATE ASSEMBLYMEMBER

Buffy Wicks

DISTRICT 14

[ABOUT](#)

[FACTS](#)

[COMMITTEE ASSIGNMENTS](#)

Buffy Wicks (D) serves in California's 14th Assembly District, representing the East Bay, including Oakland, Berkeley, and Richmond. Originally from Foresthill, California, she is a longtime political organizer with experience in grassroots advocacy and national politics.

Before her election in 2018, she worked on both of President Barack Obama's campaigns and served in his administration. Now in her third term, Wicks has led efforts on

housing reform, social safety net expansion, and digital protections for children.

Wicks serves on the following committees: Appropriations (Chair); Natural Resources; Privacy and Consumer Protection; and Housing and Community Development.



STATE ASSEMBLYMEMBER

Rebecca Bauer-Kahan

DISTRICT 16

[ABOUT](#)

[FACTS](#)

[COMMITTEE ASSIGNMENTS](#)

Rebecca Bauer-Kahan (D) represents California's 16th Assembly District, covering parts of Contra Costa and Alameda counties.

A native of the Bay Area, she is an attorney and former law professor with a background in environmental and civil rights law. First elected in 2018, she is now serving her fourth term in the State Assembly.



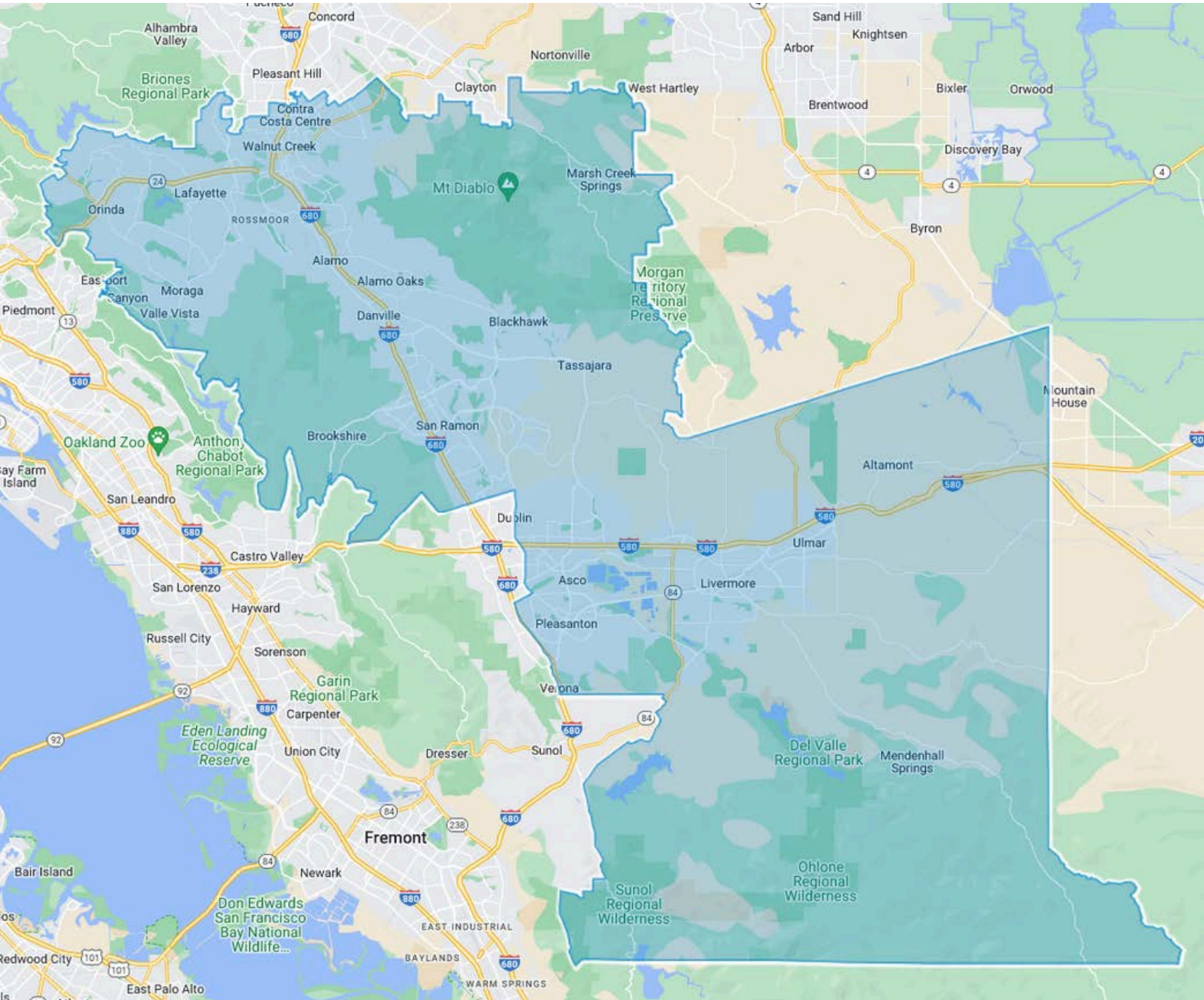
Bauer-Kahan has been a leader in advancing environmental protections, reproductive rights, and public safety policies.

Bauer-Kahan serves on the following committees: Privacy and Consumer Protection (Chair); Judiciary; Environmental Safety and Toxic Materials; and Business and Professions.

STATE ASSEMBLYMEMBER

Rebecca Bauer-Kahan

DISTRICT 16



The 16th Assembly District includes the Alameda County areas of Dublin, Livermore, Pleasanton, and Contra Costa County areas of Danville, Lafayette, Moraga, Orinda, San Ramon, and Walnut Creek.

John Gioia

DISTRICT 1

ABOUT

John Gioia (District 1), a Democrat and lifelong Contra Costa County resident, has served on the Board of Supervisors since 1999, representing West Contra Costa County, including Richmond, San Pablo, and nearby communities.

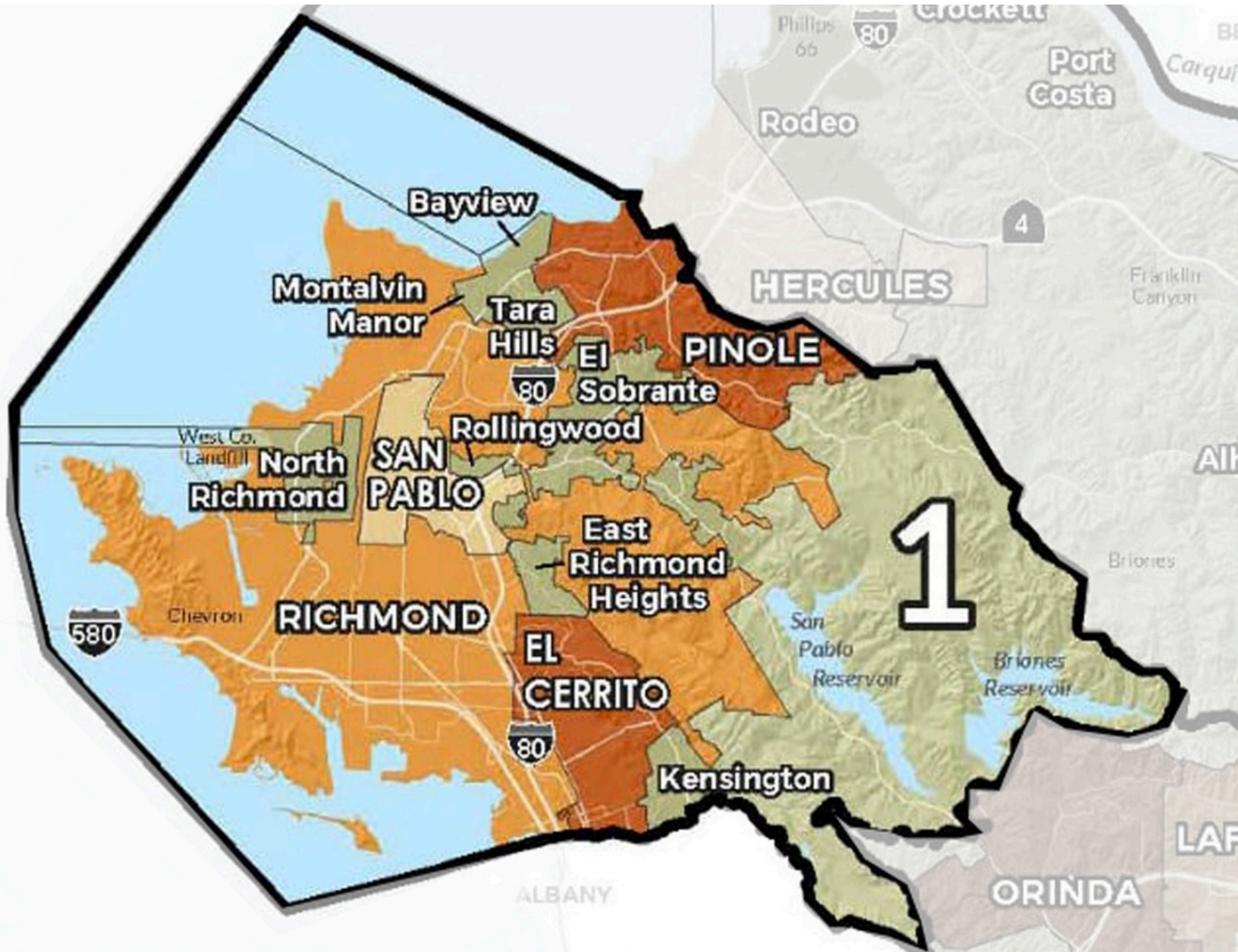
An attorney by profession, he has been a leader in environmental justice, public health, and criminal justice reform.

He has also played a key role in addressing air quality issues, expanding healthcare access, and advocating for underserved communities. He has also played a key role in addressing air quality issues, expanding healthcare access, and advocating for underserved communities.



John Gioia

DISTRICT 1



District 1 includes the cities of Richmond, San Pablo, El Cerrito, part of Pinole, and the unincorporated communities of Bayview, East Richmond Heights, El Sobrante, Kensington, Montalvin Manor, Tara Hills, North Richmond, and Rollingwood.

Candace Andersen

DISTRICT 2

[ABOUT](#)

[COMMITTEE ASSIGNMENTS](#)

Candace Andersen (District 2), a Republican, has represented Central Contra Costa County since 2012, including Danville, Lafayette, Moraga, Orinda, and parts of Walnut Creek and San Ramon.

An attorney and former mayor of Danville, she has focused on fiscal responsibility, public safety, and supporting local businesses.

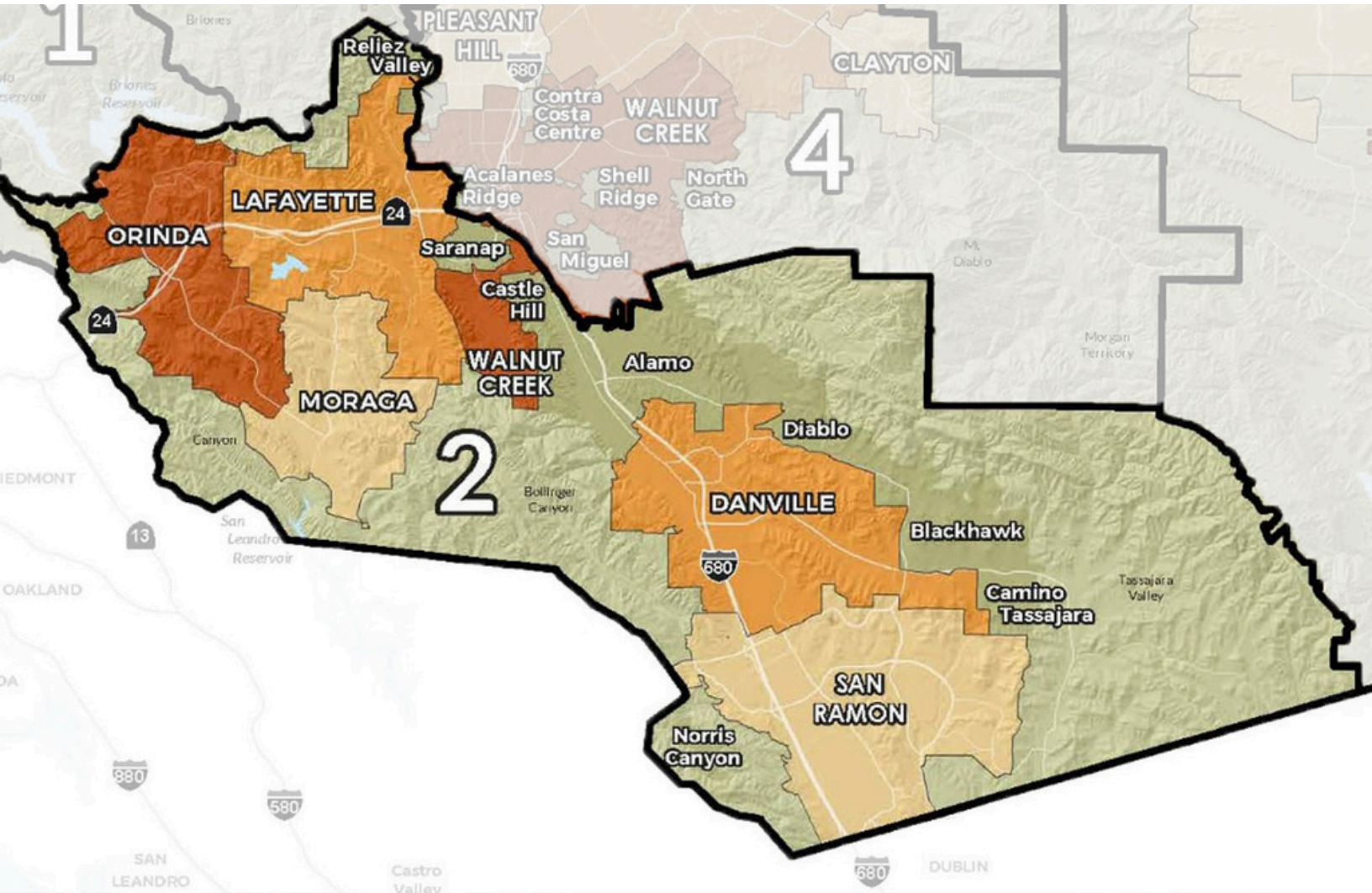
She has also been an advocate for mental health services and emergency preparedness.



Andersen serves on the following committees: Contra Costa County Fire Protection District; Contra Costa County Housing Authority; Economic Development; Finance; Internal Operations; Family and Human Services; Public Protection; and Transportation, Water and Infrastructure

Candace Andersen

DISTRICT 2



District 2 serve the communities of Alamo, Blackhawk, Canyon, Danville, Diablo, Lafayette, Moraga, Orinda, Rossmoor, San Ramon, Tassajara Valley, and parts of unincorporated Walnut Creek.

Diane Burgis

DISTRICT 3

[ABOUT](#)

[COMMITTEE ASSIGNMENTS](#)

Diane Burgis (District 3), a Democrat and East Contra Costa County resident, Burgis has served on the Board since 2017, representing communities including Brentwood, Oakley, Discovery Bay, and parts of Antioch.



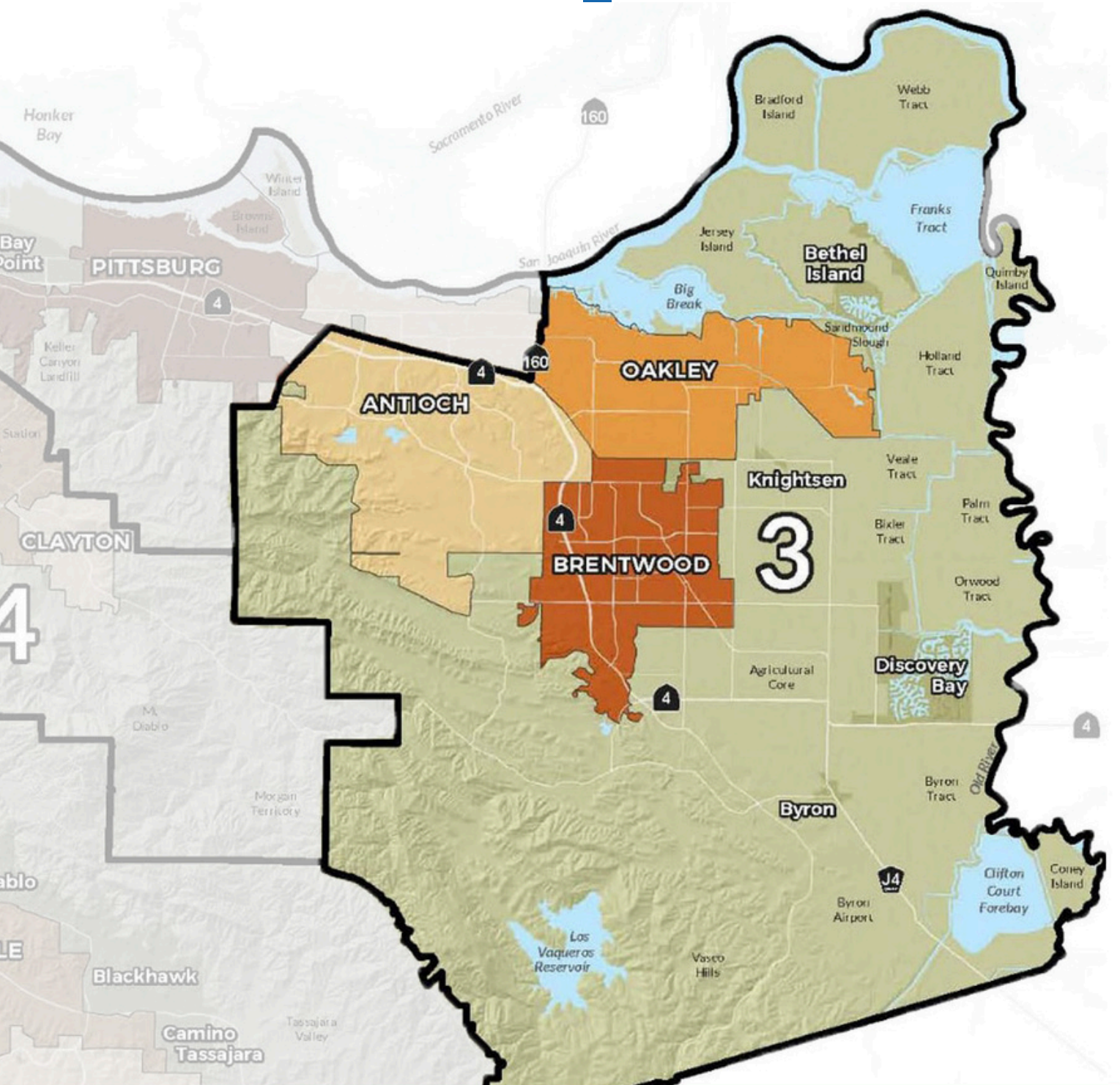
A former Oakley City Councilmember and executive director of the Friends of Marsh Creek Watershed, she has been a strong advocate for environmental conservation, water policy, and rural community needs. She has worked extensively on issues related to wildfire prevention, infrastructure, and parks and open space preservation.

Burgis serves as Chair on the following committees: Delta Protection Commission; Economic Development; Illegal Dumping Ad Hoc; Legislation; Open Space/Parks & East Bay Regional Parks District Liaison; Resilient Shoreline

She's Vice Chair on the following committees: Airports; Contra Costa Health Plan Joint Conference; Finance; Internal Operations; and San Joaquin Joint Powers Authority.

Diane Burgis

DISTRICT 3



District 3 includes the unincorporated areas of Bethel Island, Byron, Discovery Bay and Knightsen and the cities of Antioch, Brentwood and Oakley.

Ken Carlson

DISTRICT 4

[ABOUT](#)

[COMMITTEE ASSIGNMENTS](#)

Ken Carlson (District 4), a Democrat and lifelong Contra Costa County resident, Carlson was elected in 2022 to represent portions of Central Contra Costa County, including Pleasant Hill, Concord, Clayton, and parts of Walnut Creek.

A retired Concord police sergeant, he focuses on public safety, affordable housing, and mental health services.

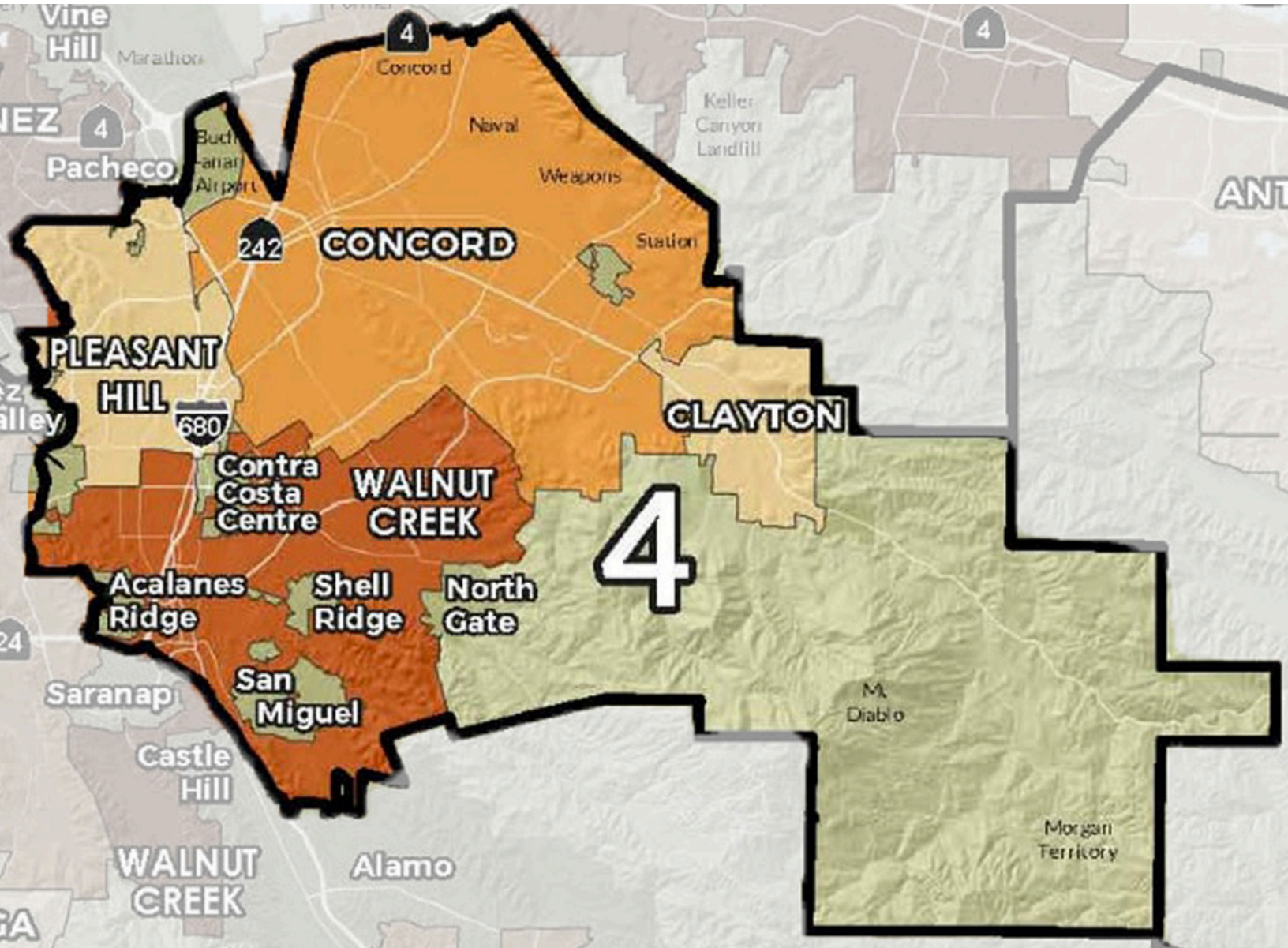


Carlson is also the first openly LGBTQ+ member of the Board of Supervisors and has been an advocate for equity and inclusion.

Supervisor Carlson sits as Chair on the following standing committees: Airport Committee, Equity Committee, Medical Services Joint Conference Committee, and Sustainability Committee. He is Vice Chair for the Los Medanos Healthcare Operations Committee and Public Protection Committee.

Ken Carlson

DISTRICT 4



District 4 includes the areas of Concord, Clayton, Pleasant Hill, Walnut Creek, Acalanes Ridge, Shell Ridge, North Gage, and San Miguel.

Shanelle Scales-Preston

DISTRICT 5

ABOUT

Shanelle Scales-Preston (District 5), a Democrat and Pittsburg native, Scales-Preston was elected in 2024 to represent East Contra Costa County, including Pittsburg, Bay Point, and parts of Antioch and Martinez.

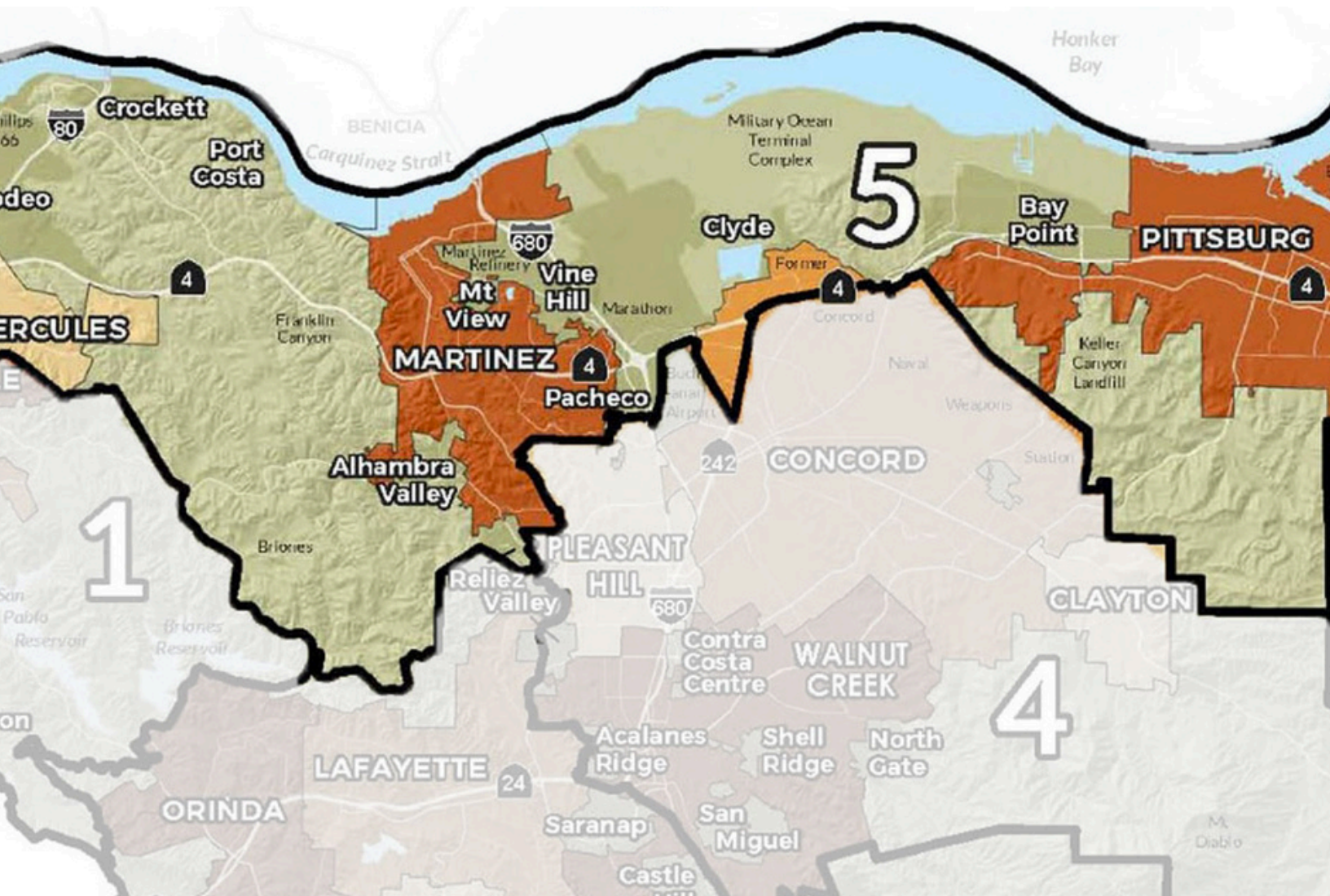
A former Pittsburg City Councilmember and longtime community leader, she has focused on economic development, infrastructure improvements, and equity for underserved communities.

Her background includes work in government affairs, education, and workforce development, advocating for policies that promote job growth and affordable housing.



Shanelle Scales-Preston

DISTRICT 5



District 5 includes the areas of Pittsburg, Bay Point, Clyde, Vine Hill, Mt. View, Martinez, Pacheco, Alhambra Valley, Port Costa, Crockett, Rodeo, and Hercules.